

job name:   
 type:

**maxx™ spec sheet 90CRI**

**material**

**trim ring**  
 precision CNC spun .063" aluminum. rolled bottom edge for added strength.

**diffuser**  
 .187" non-glare light matte high transmission acrylic dome held in place with allen key set screws recessed into trim ring.

**top dome**  
 .125" Satinice acrylic. subtle glow.

**optics**

**reflector**  
 .050" aluminum array platform painted high reflectance (>92%) matte white powder coat. downlight reflector with minimal indirect light to illuminate top dome.

**LED**

custom LED board in 3000K, 3500K, or 4000K (90+ cri standard).  
 under normal operating conditions, the LEDs employed are rated for >50,000hrs L70 (6.8K) per IES TM-21 from LM-80 test data. white power cord is standard with other color options listed below.

**driver**

integral, programmable, UL class P, class 2, universal input (120-277v), constant current, 0-10v dimming, 1% minimum dimming level, PF >.9, THD <20%, protections include open and short circuit, overload and over temperature.

**mounting**

5"dia. spun steel canopy in satin white with sloped ceiling adapter. single 12' stainless steel cable connects to field adjustable collector. An array of cables branch off and attach to trim with adjustable grippers. cable system allows for exact AFF mounting heights. sloped ceiling adapter.

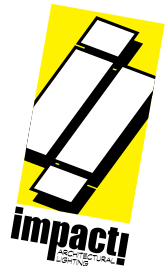
**emergency**

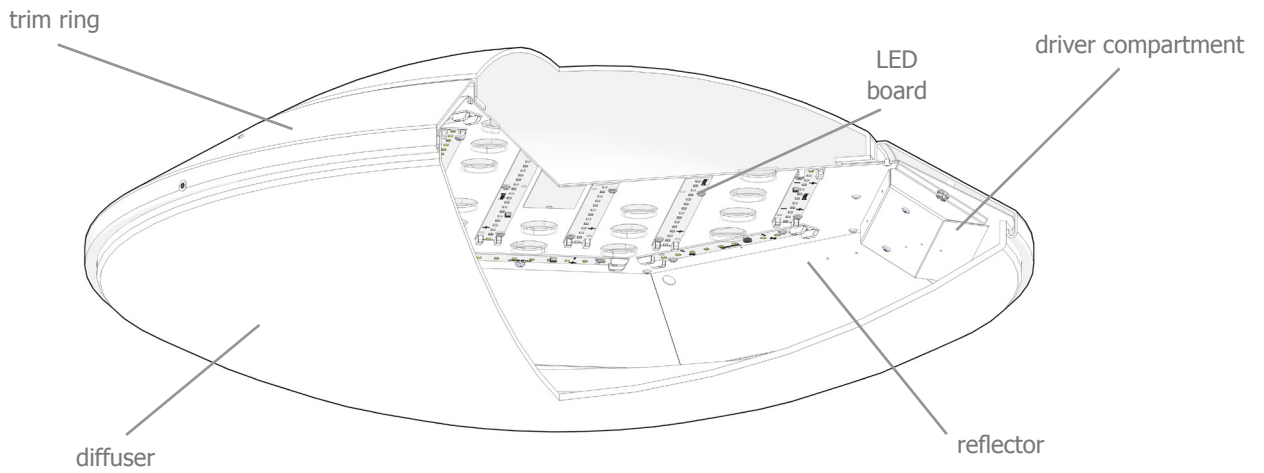
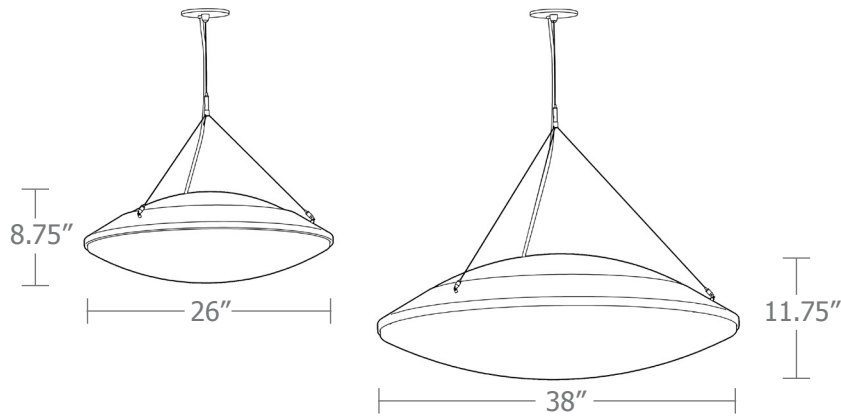
recommend use of inverter (by other).



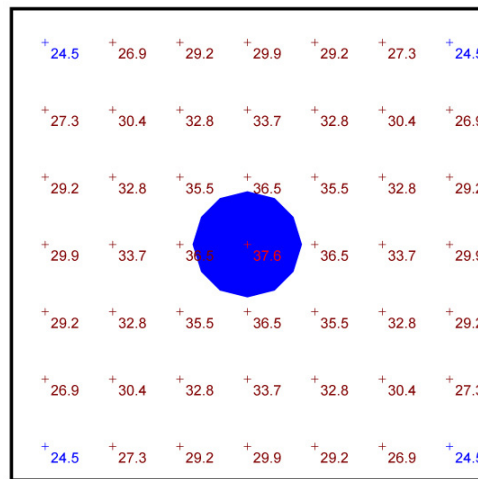
**catalog number**

size	top dome	CCT	lumens	painting finish	power cord	options	
<b>P7726</b> (2ft) 26"dia X 8.75"ht	<b>W</b> white <b>B</b> blue	<b>30</b> 3000K	<b>FX</b> 2600 lm	<b>AP</b> anodized paint	<b>WHPC</b> white power cord and canopy	<b>WREM</b> wired for remote EM battery pack (by other) (see note above)	
		<b>35</b> 3500K	<b>LO</b> 5100 lm	<b>BS</b> brass	<b>BKPC</b> black power cord and canopy	<b>ELD</b> EldoLED*	
		<b>40</b> 4000K	<b>HI</b> 8300 lm	<b>BU</b> blue	<b>SBPC</b> silver braid power cord and white canopy	<b>LUT</b> Lutron*	
			<b>HX</b> 9700	<b>BZ</b> bronze			*consult factory
			<b>CL</b> xxxx lm custom lumens consult factory	<b>CP</b> champagne			
				<b>FB</b> flat black			
<b>P7738</b> (3ft) 38"dia X 11.75"ht		<b>30</b> 3000K	<b>FX</b> 5150 lm	<b>GM</b> gun metal			
		<b>35</b> 3500K	<b>LO</b> 10200 lm	<b>MB</b> military blue			
		<b>40</b> 4000K	<b>HI</b> 16600 lm	<b>MW</b> matte white			
			<b>HX</b> 19400 lm	<b>OR</b> orange			
			<b>CL</b> xxxx lm custom lumens consult factory	<b>RD</b> red			
				<b>SB</b> satin black			
			<b>SS</b> satin silver				
			<b>TG</b> textured gray				
			<b>YO</b> yellow				
			<b>premium finish</b>				
			<b>RAL</b> specify RAL#				





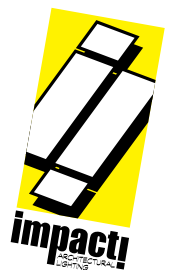
- 14' x 14' x 20'H space
- 80/50/20 reflectances
- bottom of fixture at 16' aff
- FC readings at 2.5' aff
- layout conducted using 38" dia. unit with HI lumen 90 CRI package providing 16600 delivered lumens



**Plan View**  
Scale - 1" = 4ft

**Statistics**

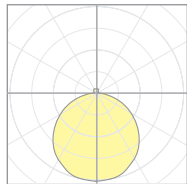
Description	Symbol	Avg	Max	Min	Max/Min	Avg/Min
maxx	+	30.9 fc	37.6 fc	24.5 fc	1.5:1	1.3:1



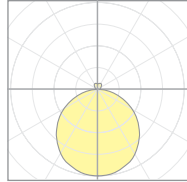
## Calculation Table

The application of a Light Loss Factor is required to:

- match the lumen output for the power module specified
- incorporate the increased lumen output due to LED/Driver upgrades



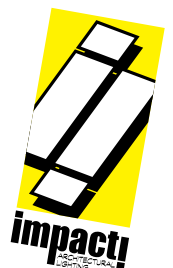
18696  
P7726-W



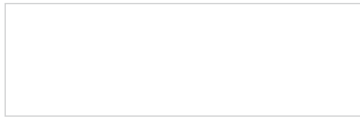
18698  
P7738-W

Cat No	Delivered* Lumens	Watts 120V / 277V	IES File #	LLF to be applied
<b>P7726 FX</b>	2600	30	<b>18685</b>	.38
<b>P7726 LO</b>	5100	59	<b>18685</b>	.75
<b>P7726 HI</b>	8300	96	<b>18685</b>	1.21
<b>P7726 HX</b>	9700	112	<b>18685</b>	1.42
<b>P7738 FX</b>	5150	59	<b>18689</b>	.70
<b>P7738 LO</b>	10200	118	<b>18689</b>	1.40
<b>P7738 HI</b>	16600	192	<b>18689</b>	1.40
<b>P7738 HX</b>	19400	224	<b>18689</b>	1.63

\*delivered lumens based on 4000K, 90+ cri



## Powder Coat Paint Finishes



**MW** matte white



**AP** anodized paint



**SS** satin silver



**TG** textured gray



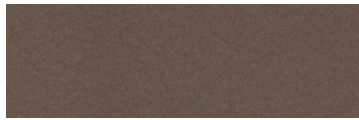
**FB** flat black



**SB** satin black



**CP** champagne



**BZ** bronze



**GM** gun metal



**OR** orange 2011



**BU** blue 5017



**BS** brass



**RD** red 3020



**YO** yellow 1018



**MB** military blue

For accurate color verification, actual finish samples are available upon request.

## Premium Finishes\*



**RAL#**

\*Available on select series. Consult product submittal for availability.

